

## WESTATLANTIC Tech Corp.

www.westatlantictech.com / www.pipelinecoupling.com

sales@westatlantictech.com 902 455 4455

### SKID MS DUO VERSION 2

For pipe diameters greater than 20 inch (500 mm)

Load per spacer: max 3200kg / 7000lbs

Spacing: 1.5 m intervals along the pipe bore

Working temperature: -20 to 80 C

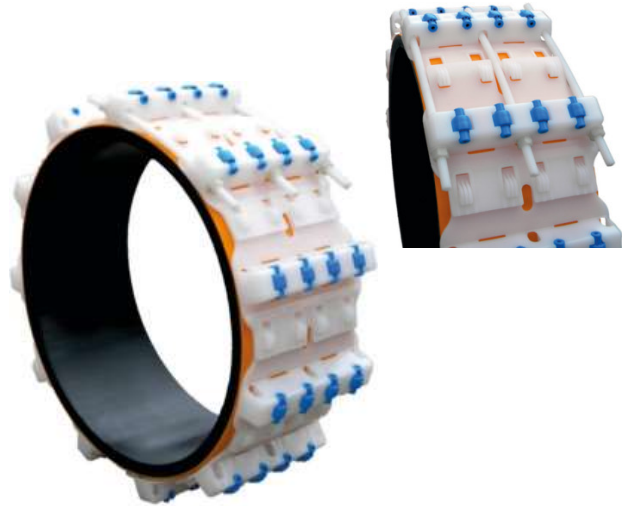
Closing bolt locks: Nylon

Casing material: HDPE

Width of runners: 240 mm

Leg Height mm: 32, 50, 70, 100, 160

Inches 1.25, 2.00, 2.75, 4.00, 6.30



Skid MS Duo version II

**Duo II wheel runner spacers** are designed for large diameter pipes. There are no metal parts, no special tools are required for installing the spacer. Total cathodic protection for the pipe line is provided. Wheel Skids reduce insert loads and convert slide friction to the rollers. The Duo II has 4 wheel rollers per skid length.

### Installation

Installation is simple and requires only a wrench tool.

Inter-connect the appropriate number of skid elements to form the spacer.

Wrap the casing spacer around the carrier pipe.

Close the Spacer with the nylon closing bolts, nuts and washers.

At the correct spacing point, tighten the nuts evenly to clamp the spacer to the carrier pipe.

Slide the carrier pipe into the casing at appropriate intervals and install the next series of spacers.

Properly installed Duo II casing spacers will provide long life carrier pipe support for the application.

**Wheel roller casing spacers are available for all large pipe diameters.**

**Multi-Pipe configuration wheel roller spacers, through the same casing, are also available.**

**Contact Westatlantic Tech Corp. for sizing and pricing.**