



Installation Instruction Split compression PSI plug sealing

1. Preparation of the wall opening

The wall opening (PVC sleeve, core drilled hole, steel sleeves....) must be **cleaned inside**. Please make sure that **there is no dirt**.

2. Greasing

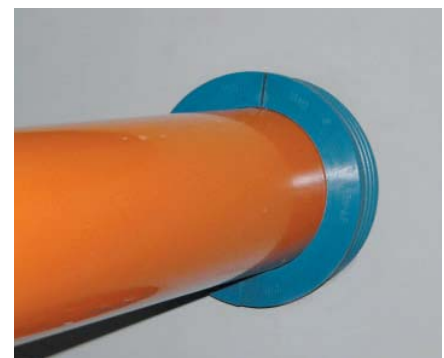
Grease the inside of the wall opening and **the outside and inside of the sealing plug** with **acid free Vaseline**. This makes installation much easier and ensures a longer sealing life. You can get the Vaseline from PSI (150 ml).

3. Installation

Please make sure that **the cable or pipe is laying straight and centred in the wall opening**. Put the **two half shells** of the PSI Sealing Plug around the cable or pipe and **push the sealing in the opening**. Attention: **both half shells must be correctly positioned on each other**. The plug must be **pushed in until the flange touches the wall**. Don't push any further ! If installation is more difficult (for example with larger plugs) use a piece of wood and a hammer and carefully push in the sealing.

Please consider:

- Plug can be disassembled only from the backside
- Before installing coredrill, casing pipe dimensions has to be checked, tolerance O.D. max. +1mm
- Plug is not recompressable
- Weight of the pipe has to be carried/beared otherwise



WESTATLANTIC Tech Corp.

www.westatlantictech.com / www.pipelinecoupling.com

sales@westatlantictech.com + 902 455 4455

PIPE THROUGH WALL SEALING

HDPE FLAP VALVE WATER CONTROL SYSTEMS

PUDDLE FLANGE SEALING

ONSHORE - OFFSHORE - SHIPBUILDING - PIPE REPAIR - MARINE