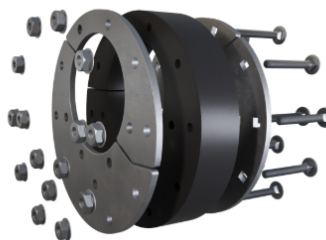


Seals for pipe not centered through an opening - WAGP-UM mechanical seals



If a pipe is not centered through a wall opening, it means the pipe is positioned off to one side of the opening in the wall, or not directly in the middle, potentially causing issues with alignment, aesthetics, and potentially structural concerns depending on the situation

Solutions:

Use a High-quality WAGP-UM seal designed to seal a pipe, or cable passing through a opening where the pipe is not centered. The seal secures the opening, prevents water, moisture and gases from penetrating.

Application:

Watertight and/or gas-tight sealing of the annular space between pipe, cable or wire and casing pipe.
For pipes, cables and wires made of any material with any wall thickness. The space to be sealed must be greater than 25 mm and less than 300 mm.

A WAGP-UM may be used in electricity, fiber optic, water, gas, sewage, and industrial networks pipe misalignment.

Product Features

Seal pipe with an outer diameter of 50 mm to 3000 mm,
Working pressure: max. 0.25 MPa, (36 psi)
Angular deviation (of the pipeline axis from the hole axis) : max 2°,
The seal is always split for existing conditions, or planned spacing.

Seal material operating temperature:
EPDM (-30°C ÷ +100°C),
EPDM-KTW (-30°C ÷ +100°C),
NBR (-35°C ÷ +125°C),
SILICONE (up to +230°C).