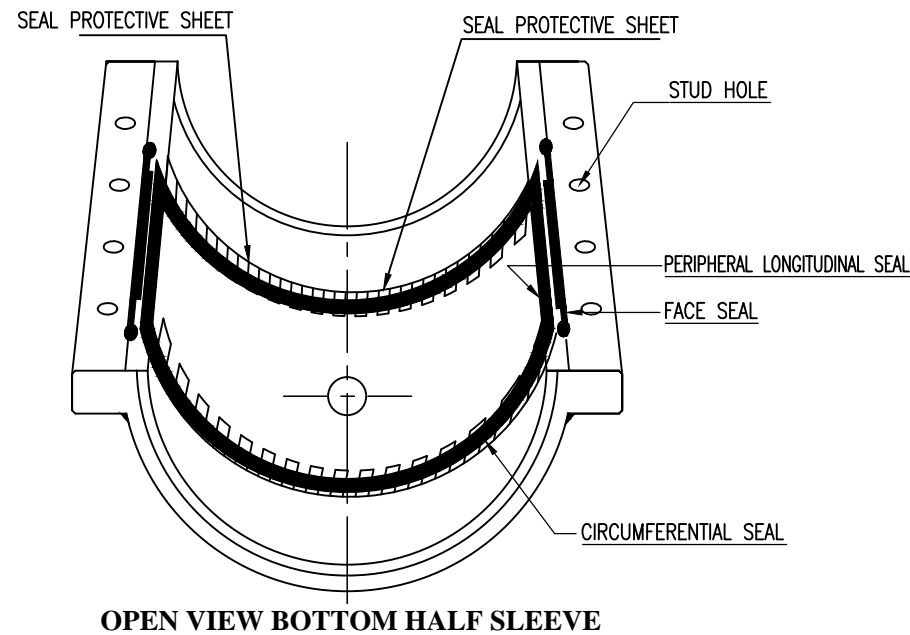


PLAN



OPEN VIEW BOTTOM HALF SLEEVE

# TECHNICAL DATA

DESIGN CODE	ASME SECTION VIII, DIV-1
DESIGN PRESSURE	1500 PSI
HYD. TEST PRESSURE	1950 PSI
DESIGN TEMPERATURE	+65°C
PW HEAT TREATMENT	AS PER CODE

## MATERIAL OF CONSTRUCTION

SR.	DESCRIPTION	MATERIAL
01	SPLIT BODY SHELL	SA/ASTM A 516 GR.70
02	BODY FLANGE (STIFFENER)	SA/ASTM A 105
03	STUD	SA/ASTM A 193 GR.B7
04	NUT	SA/ASTM A 194 GR.2H
05	SEALS	BUNA-N
06	1/2" NPT VENT PLUG & HALF COUPLING	SA/ASTM A 105
07	SEAL PROTECTIVE SHEET	SS 304

## NOTES:

1. ALL DIMENSION ARE IN MM UNLESS SPECIFIED.
2. ALL CLAMPS ARE HYDROTESTED DURING INSPECTION & SEALS REPLACED THERE AFTER.
3. HYDRO TEST AT 1950 PSI FOR 60 MINUTES.
4. FACE SEAL IS PROVIDED ON ONE HALF OF CLAMP.
5. ALL EDGES ARE CHAMFERED TO 45° & ROUNDED FOR SAFE HANDLING.
6. VENT PLUG IS INSTALLED WITH PTFE (TEFLON) TAPE.

## TOLERANCES

Shell	: on Axial Length	: ±5 mm
	: on Inner Diameter	: ±3 mm
	: on Sealing length	: ±3 mm
Stiffener	: Length	: ±5 mm
Centre to Centre		: ±3 mm

## PAINTING:

RED OXIDE PRIMER 40 MICRON DFT MIN.

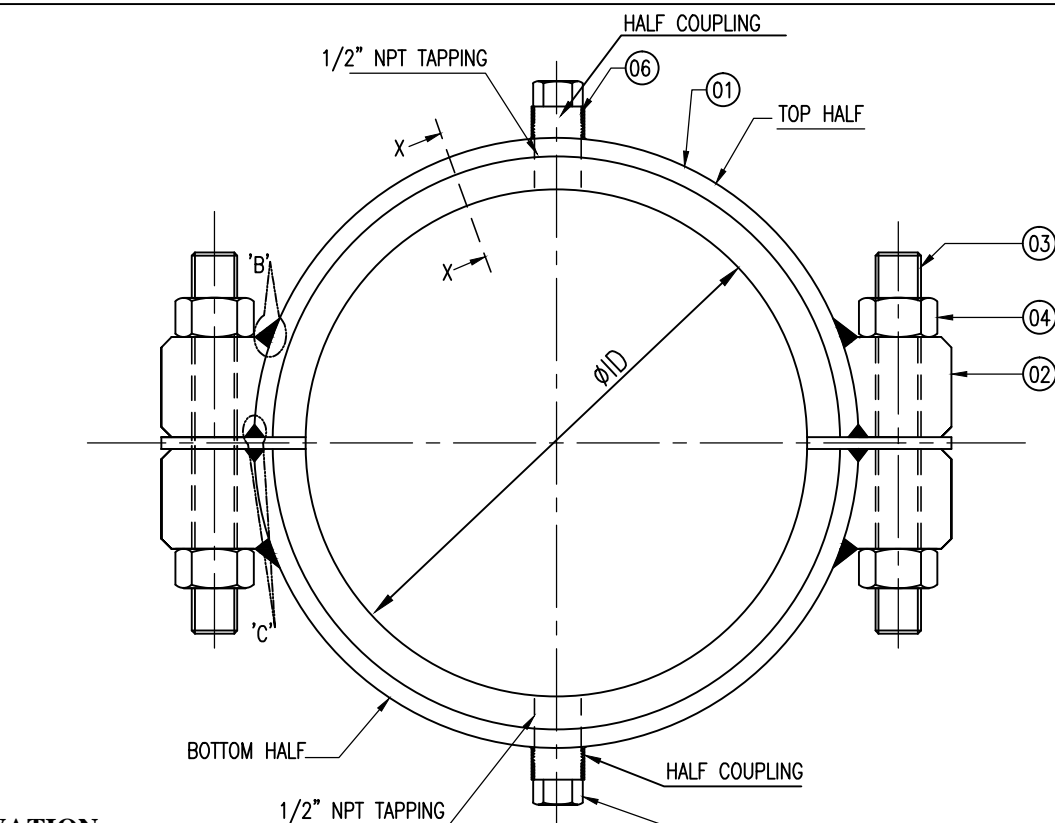
## NDT:

- 1) 100% MPI : SHELL TO STIFFENER WELDS
- 2) 100% UT : HALF COUPLING TO SHELL WELDS.

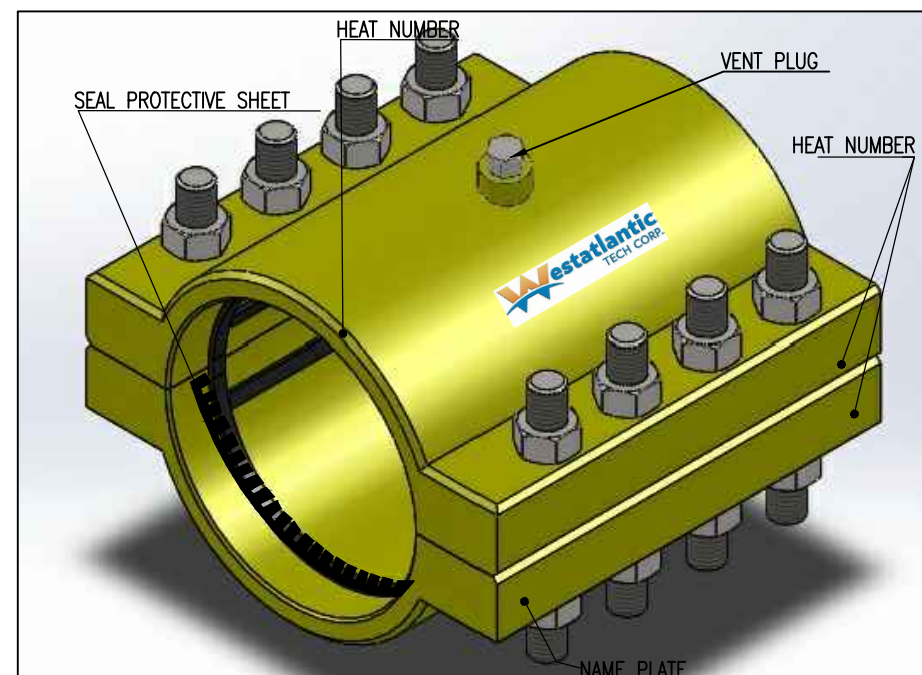
Final drawings to be approved by customer before units go to the build stage

## Sample Drawing

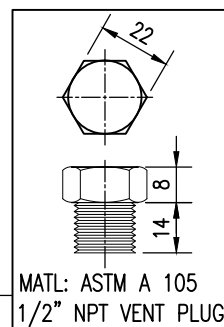
Bolted pipe leak repair clamps  
High pressure Clamps  
Pipeline remains in service  
During installation



ELEVATION



(Sample display draws only - for pipe sizes 3" - 4" - 6")  
8" and 10 inch" pipe draws to be included in final drawings if offer progress to final PO



MATL: ASTM A 105  
1/2" NPT VENT PLUG

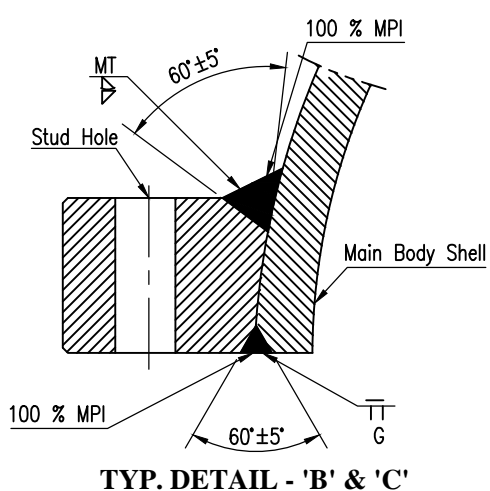
## DIMENSION DETAILS

SR. NO.	NOM. PIPE SIZE		ØID (mm)	SEAL LENGTH S (inch)	OVERALL LENGTH L (inch)	CLAMP QUANTITY NOS.
	INCH	MM				
1	3"	88.9	Ø94	5.25"	8.5"	10
2	4"	114.3	Ø119	5.25"	8.5"	10
3	6"	168.3	Ø173	5.25"	9"	10

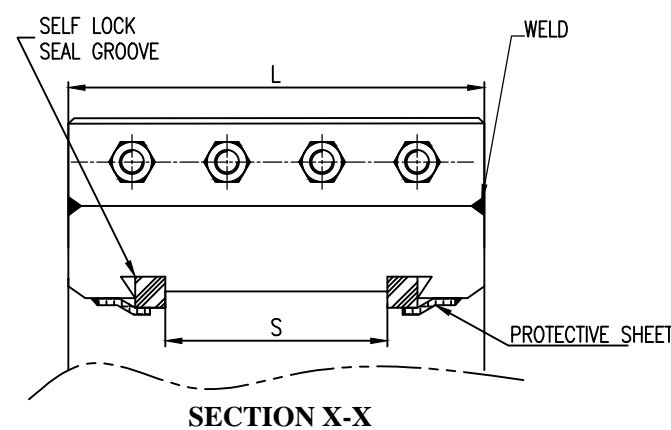
DRN. BY	DEVARSH	12.12.2017
CHD. BY	AKASH	12.12.2017
APPD. BY	KRUNAL	12.12.2017
SCALE	NTS	



WESTATLANTIC Tech Corp. www.westatlantictech.com sales@westatlantictech.com 902 455 4455					
DRG. NO.:					REV. 0

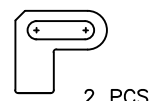
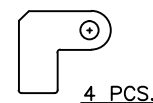
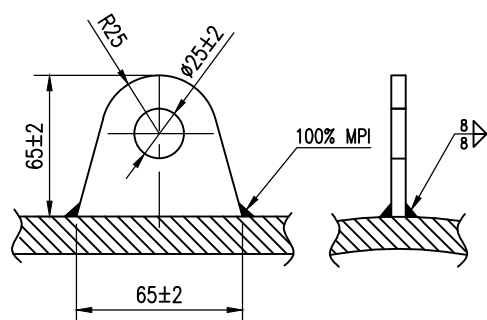
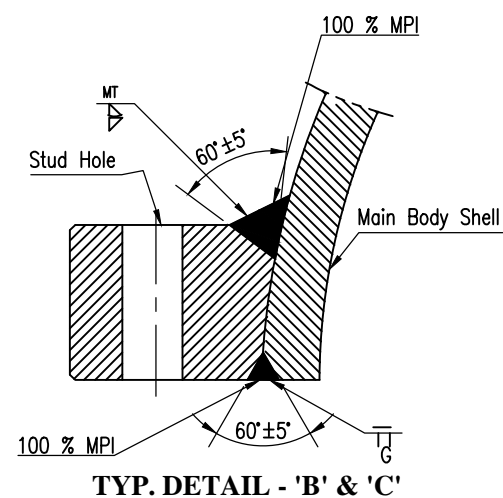
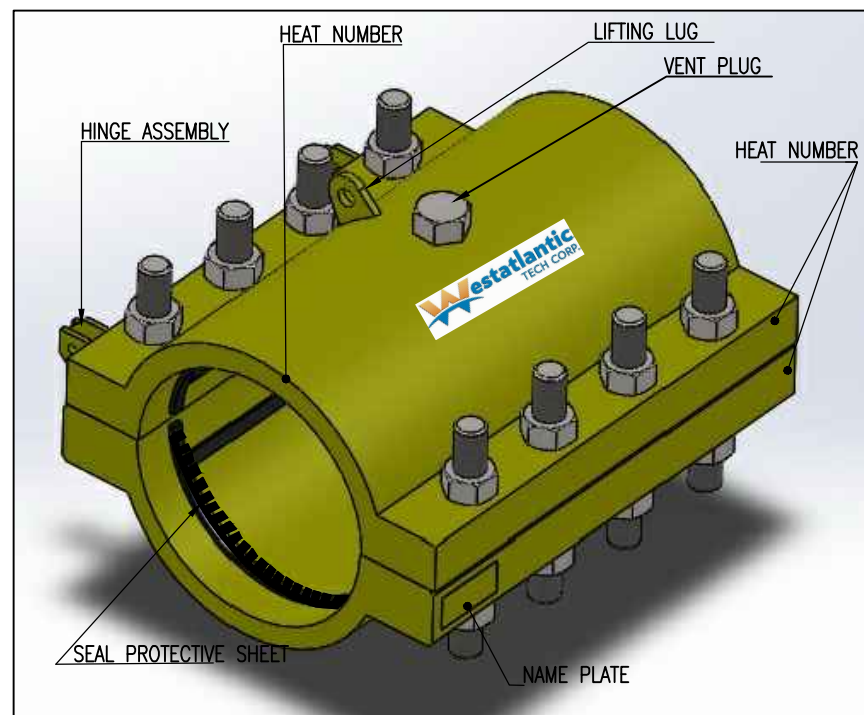
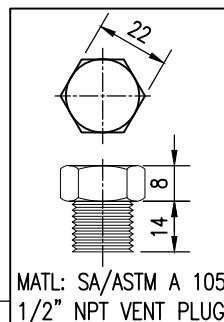
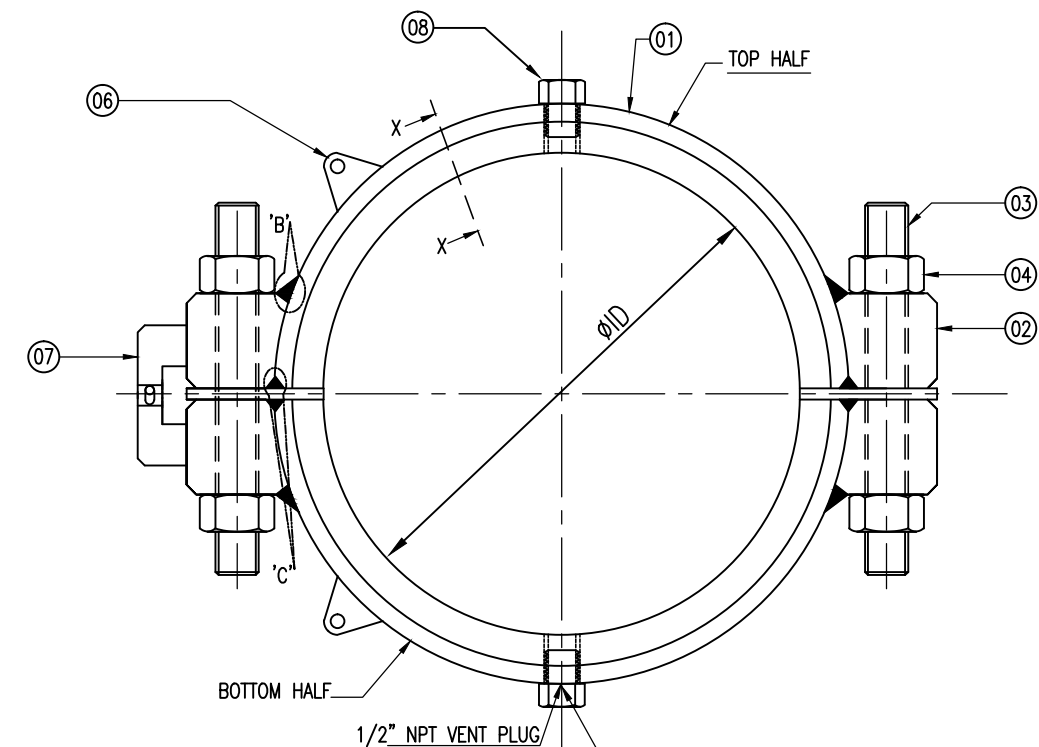
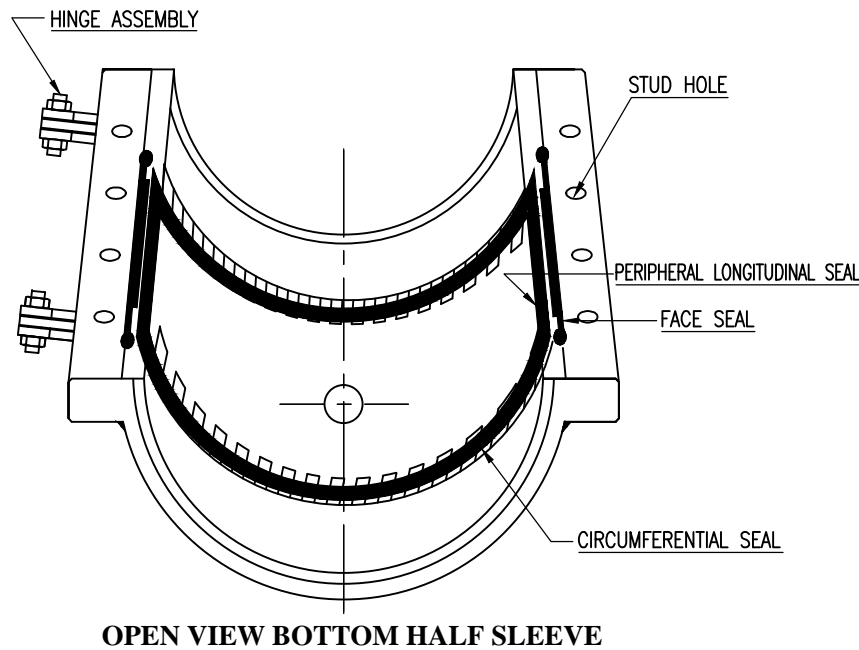
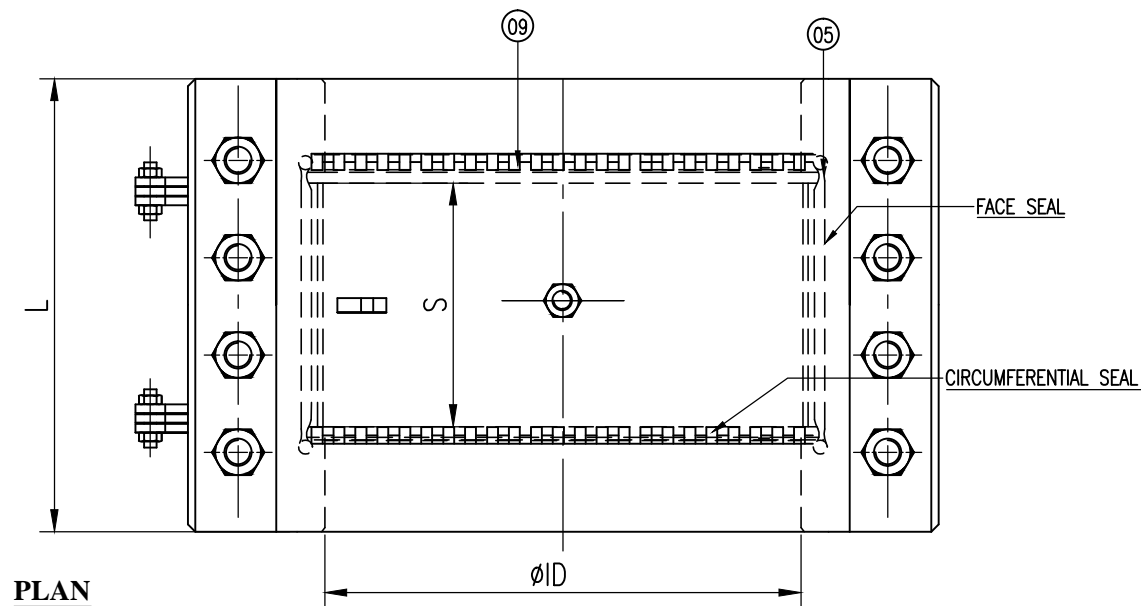


TYP. DETAIL - 'B' & 'C'

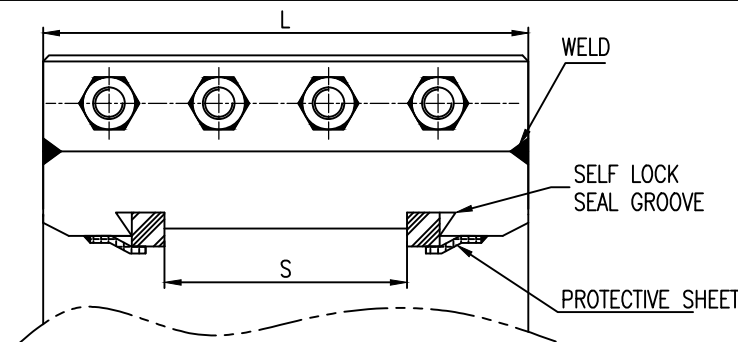


SECTION X-X

## Sample Drawing



**HINGE DETAIL  
INDICATIVE ONLY**



(Sample display draws only - for pipe sizes 8" - 10" - 12")  
8" and 10 inch" pipe draws to be included in final drawings if offer progress to final PO

## TECHNICAL DATA

DESIGN CODE	ASME SECTION VIII DIV.I
DESIGN PRESSURE	1500 PSI
HYD. TEST PRESSURE	1950 PSI
DESIGN TEMPERATURE	+65°C
PW HEAT TREATMENT	AS PER CODE

## MATERIAL OF CONSTRUCTION

SR.	DESCRIPTION	MATERIAL
01	SPLIT BODY SHELL	SA/ASTM A 516 GR.70
02	BODY FLANGE (STIFFENER)	SA/ASTM A 105
03	STUD	SA/ASTM A 193 GR.B7
04	NUT	SA/ASTM A 194 GR.2H
05	SEALS	BUNA-N
06	LIFTING LUG	SA/ASTM A 516 GR.70
07	HINGE ASSEMBLY	SA/ASTM A 516 GR.70 & SA/ASTM A 193 GR.B7& SA/ASTM A 194 GR.2H
08	VENT PLUG	SA/ASTM A 105
09	SEAL PROTECTIVE SHEET	SS 304

## NOTES:

1. ALL DIMENSION ARE IN MM UNLESS SPECIFIED.
2. ALL CLAMPS ARE HYDROTESTED DURING INSPECTION & SEALS REPLACED THERE AFTER.
3. HYDRO TEST AT 1950 PSI FOR 60 MINUTES MIN.
4. FACE SEAL IS PROVIDED ON ONE HALF OF CLAMP.
5. ALL EDGES ARE CHAMFERED TO 45°& ROUNDED FOR SAFE HANDLING.
6. VENT PLUG IS INSTALLED WITH PTFE (TEFLON) TAPE.

## TOLERANCES

Shell	: on Axial Length	: ±5 mm
	: on Inner Diameter	: ±3 mm
	: on Sealing length	: ±3 mm
Stiffener	: Length	: ±5 mm
Centre to Centre		: ±3 mm

## PAINTING:

RED OXIDE PRIMER 40 MICRON DFT MIN.

## DIMENSION DETAILS

SR. NO.	NOM. PIPE SIZE INCH	MM	ØID (mm)	SEAL LENGTH S (inch)	OVERALL LENGTH L (inch)	CLAMP QUANTITY NOS.
4	8"	219.1	Ø224	5.25"	10"	04
5	10"	273.1	Ø278	5.5"	10.5"	03
6	12"	323.9	Ø329	5.5"	10.5"	03

## NDT:

- (1) 100% MPT :- STIFFENER TO SHELL WELDS.
- (2) 100% MPT :- HINGE WELDS.

Final drawings to be approved by customer before units go to the build stage

Bolted Leak Repair clamps  
High pressure Clamps  
Pipeline remains in service  
During installation

0	FIRST ISSUE FOR INQUIRY	D.P	AMP	KS	12.12.2017
NO.	REVISIONS	BY	CHK	VKV APRD.	DATE

TITLE: **PIPELINE LEAK REPAIR CLAMP  
(BOLTED TYPE)**



**Sample Drawing**

REV.  
**0**