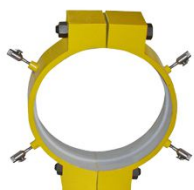




- No special flange surface preparation is required.
- Flange repair clamps may be installed by company maintenance personnel.
- There is no altering of existing flanges, other than cleaning the flange.



FLANGE LEAK REPAIR CLAMP

Stop Leaks In Flange Seals while the pipeline remains in service.

Flange Clamp + RepairRings can be installed by your own personnel. There is no drilling or altering of flanges. On a scheduled turnaround, they can be removed, flanges cleaned, the gasket replaced and the flanges put back in service. The Flange Clamp + RepairRing can be reconditioned and used again.

Give us your conditions - pressure, temperature, fluid - and we will recommend the proper sealant and packing. Standard packing is non-asbestos aramid fiber.

Flange Clamp + RepairRings incorporate patented steel GirderRings to hold packing in place during installation. Available from stock in standard flange sizes 1/2" through 12", 150 lb. ANSI thru 600 lb. ANSI. Larger or special sizes, higher temperature and pressure ratings available on application.

Flange Clamp + RepairRings are installed by placing the halves around flange and using the studs and nuts to draw them together.

Bolt leakage is stopped by injecting recommended sealant with pressure gun through giant buttonhead fittings. Starting from bottom and going from buttonhead to buttonhead, exert gun pressure slowly and carefully to prevent over-pressuring the assembly. A good pressure gun can exert 10,000 psig or more which could displace the packing or overload the flange bolting.

Maximum temperature rating for the standard Flange Clamp + RepairRing is 750° F. Standard steel is ASTM certified Pressure Vessel Quality plate. Other materials are available for higher or lower temperatures.

We supply complete repair kits, including sealant, pressure gun, etc. Prices quoted on request.



Specifications

Size Range	2" to 48" Nominal diameter and above Branch Dia: 2" to RunPipeDia
Class Ratings	ASME 150# through to 2500#
Design Code	ASME VIII Division 1 / ASME VIII Division 1 with 'U' Stamp ASME VIII Division 2 / ASME VIII Division 2 with 'U' Stamp
Clamp Orientation	Horizontal / Vertical / Angular
Weld Edge Details	ASME B31.3, B31.4, B31.8
Material	ASTM A350 LF2 / ASME SA350 LF2 ASTM A105 / ASME SA105
Elastomeric Sealing	Nitrile, Viton, HNBR. Other Material Options Available on Request.
Overlay Seal Groove	316 Stainless Steel, Inconel 625 Weld Overlay or other materials to meet your specific requirements.
Accessories	ANODE, Heat Insulation Cord #gdraulic Actual.

Other Materials are available
Stud & Nut Coatings -Galvanized, PTEF, Xyeon



Flange leak repair clamps WA-FRC units are a permanent repair clamp for leaking flange gaskets under high operating pressure. The line remains in service during installation, no costly shutdowns.

1) VKVC Flange Leak Repair Clamp are used to install on flanges to stop leakage from flanges faces.

2) VKVC clamp are designed as per ASME sec. VIII div. 1 UG-17 & Base Engineer.

3) VKVC Flange Leak Repair Clamp are provided for standard flanges as per ASME B 16.5 & 16.47 & other customized flanges.



Flange leak repair clamps, stop flange leaks, high pressure pipes, USA and Canada, USA, Texas, TX, Houston, Florida, FL, Miami, Tampa, Naples, Louisiana, New York, NY, Illinois, IL, North Dakota, ND, Utah, UT, Salt Lake City, Iowa, IA, Ohio, OH, Michigan, New York, NY, Utah, Arkansas, Kentucky, KY, California, CA, Colorado, Denver, LA, Pennsylvania, PA, Wisconsin, WI, Canada, Ontario, Oakville, Toronto, London, Hamilton, Mississauga, Alberta, AB, Edmonton, Fort McMurray, Calgary, Alberta, AB, Fort McMurray, Medicine Hat, Grande Prairie, Fort St. John, Edmonton, Brooks, Swift Current, British Columbia, BC, Kelowna, Vancouver, Prince Rupert, Victoria, Kilmat, Saskatchewan, SK, Regina, Saskatoon, Prince Albert, Estevan, Swift Current, Manitoba MB, Winnipeg, Thompson, Quebec, QC, Montreal, Quebec City, Trois-Rivières, Chaboussière, Sherbrooke, QC, Alberta, Saskatchewan, Manitoba, Quebec, New Brunswick, NB, Newfoundland, NL.