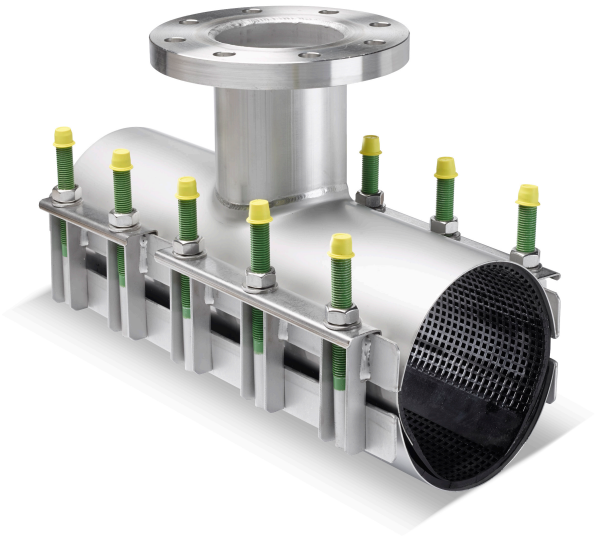


Stainless Steel Tapping Sleeves.
Fits all American Pipe Sizes up to 24 inch.

Westatlantic stainless steel tapping tee type SST are used for permanent (hot) taps on several pipe types
for water, gas and petrochemical fluids



The SST is in fact a reinforced double band clamp with a flanged outlet. The standard working range is 20mm. The upper body is reinforced to accommodate the installation of valves and drilling equipment.

Advantages:

- **Inventory reduction:**
The built-in range of 20 mm allows one sleeve to fit various classes of steel, PVC, ductile iron, cast iron or asbestos-cement pipe.
- **Easy installation:**
No specially trained personnel or tools needed. A wrench to tighten bolts is the only tool required to install the sleeve.
- **Full circumferential seal:**
Allows you to tap size on size with confidence. No more need for heavy, hard to assemble, cast iron sleeves.
- **Material:**
Stainless steel AISI 304 or 316 L.
- **Light weight:**
The high tensile strength of stainless steel allows us to manufacture the lightest tapping sleeve in the industry. easy to handle and less load on the pipe.
- **Reinforces pipe:**
Full circle design reduces stress on the pipe opposite of the tap.

Material specification:

- All metal parts: stainless steel AISI 304 or AISI 316L.
- Metal parts have been deburred and are passivated to restore the corrosion resistance to its original state after the welding process.
- Double band (two sections). For detailed working ranges please see our price-list.
- Standard certified rubber gaskets EPDM or NBR. The rubber is tapered and has a waffle pattern.
- Seamless rubber lining for every clamp diameter.
- Bridge plates are vulcanized into the rubber gasket.
- U-shaped lifter bars.
- Stainless steel, electrolytic zinc plated nuts to prevent galling.
- Stainless steel washers.
- No loose parts that may get lost during installation.
- No special tools required: a simple wrench will do the job.
- Special tape is used to fix the rubber gasket to the stainless steel band. This tape is flexible and reinforced with glassfibre thread to withstand hot and humid conditions and guarantee a long storage capability.
- The SST tapping sleeve is designed for under pressure drilling (hot taps).

Pressure ratings (for water):

Pressure ratings depend on the type of pipe, branch OD, medium etc. In general, SST tapping Tees are for use on pipes up to and including DN 600 mm and can resist a pressure of 16 bar. Please contact Romacon or your distributor for more information regarding pressures on gas pipes.

Flange design:

Flanges are drilled acc. to DIN 2576 and NEN 1092-1. The flange thickness is 24 mm for flanges up to DN 200 and 26 mm for flanges up to up to DN 300. Standard flanges are flat faced PN 10, but raised faced, ASA and PN 16 flanges are available upon request.

Depending on OD and flange size the branch can be supported by an additional reinforcement. Pipe and valve should always be supported according to standard codes of practice.

Size on size tapping sleeves require the use of an undersized shell cutter. Please ask your distributor for more information.

The SST sleeve can be used to repair the following pipe types:

- Ductile Iron (DI) - PE coated steel
- Cast Iron (CI) - PVC*
- Steel (St.) - GRP*
- Asbestos Cement (AC) - PE*

** If pipe repair clamps are to be used on plastic pipes, please always contact Romacon or a Romacon distributor for more information regarding the application and restrictions on these pipe types.*

Available sizes:

SST tapping tee clamps are available for pipe diameters from DN 80 up to DN 800. Standard length: 500 mm.

Besides our standard program, we are able to manufacture any range or length that you may require.

Available rubber gaskets:

Romacon clamps can be supplied with the following types of rubber:

EPDM	- potable water - waste water	max 60 degr. C.
EPDM HT	- potable water - waste water	max 150 degr. C.
NBR	- natural gas - potable water - waste water	max 70 degr. C.
Viton	- several chemicals pls contact HUWA	max 200 degr. C.