

WA Tight Space Repair Clamp

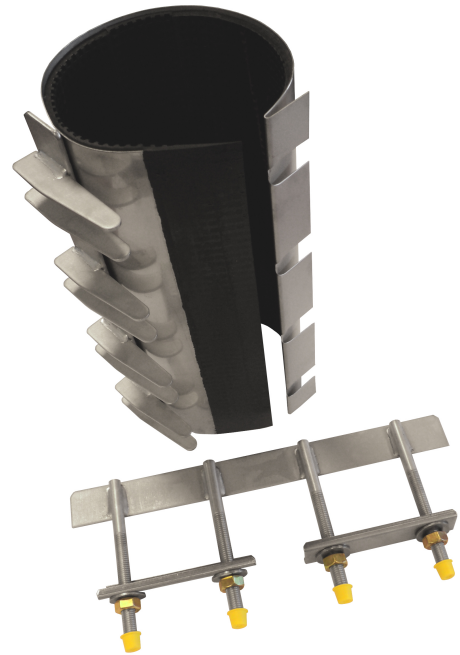


www.westatlantictech.com / www.pipelinecoupling.com

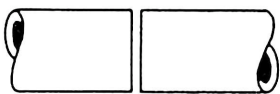
sales@westatlantictech.com + 902 455 4455

WA stainless steel repair clamps style
WA H.E.A.T are used for permanent repairs
of broken and damaged pipes in tight spaces

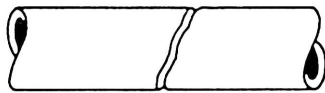
for water, gas and petrochemical fluids



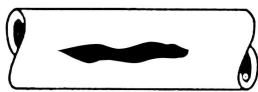
Following types of damage
can be repaired:



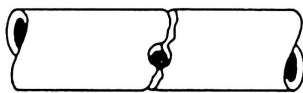
Pipe Longitudinal connection



Damage due to broken pipes



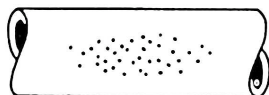
Longitudinal cracks



Cracked pipe after hot tap



Misaligned pipes



Pit holes

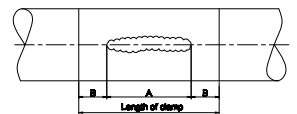
The clamps can be used to repair the following pipe types:

- Ductile Iron (DI)
- Cast Iron (CI)
- Steel (St.)
- Asbestos Cement (AC)
- PE coated steel
- PVC*
- GRP*
- PE*

* If pipe repair clamps are to be used on plastic pipes, please always contact Westatlantic for more information.

WA repair clamps should be used
under following conditions:

- The width of the clamp should be equal to at least the pipe OD.
- The width of the clamp should be 150 mm greater than the length of any crack on pipes with an outside diameter up to 350 mm. On larger pipes this should be at least 200 mm.
- For PVC pipes, the width of the clamps should be 50 % longer and bolt torque should be reduced by 50 %. We prefer that you consult Westatlantic.
- The maximum allowable distance between two pipe ends should not exceed 10 mm.
- The maximum allowable deflection is 2 degrees.
- The maximum allowable offset should not exceed 3 mm.



WA Tight Space Repair Clamp

Material specification:

- All metal parts: stainless steel AISI 304 or AISI 316L.
- Metal parts have been deburred and are passivated to restore the corrosion resistance to its original state after the welding process.
- Single band (one section) with a working range of 7–11 mm depending on the diameter. For an overview of all working ranges please see our price-list.
- Standard certified rubber gaskets EPDM or NBR. The rubber is tapered and has a waffle pattern.
- Seamless rubber lining for every clamp diameter.
- Bridge plate is vulcanized into the rubber gasket.
- U-shaped lifter bars.
- Stainless steel, electrolytic zinc plated nuts to prevent galling.
- Stainless steel washers.
- No special tools required: a simple wrench will do the job.
- Special tape is used to fix the rubber gasket to the stainless steel band. This tape is flexible and reinforced with glassfibre thread to withstand hot and humid conditions and guarantee a long storage capability.
- Under most circumstances the clamps can be installed without releasing the pressure on the pipe.
- With the clamp's removable closing mechanism you only need 10mm of free space to install the clamp.
- The clamps are separately packed into strong double-rib cartons. For export overseas we use strong, seaworthy crates.

Other:



Also available with grip for easier installation.



The vulcanized bridge plate guarantees a leakproof sealing.

Available sizes:

WA H.E.A.T clamps are available in many different working ranges for pipes of DN 40 – DN 350. Please consult our price-list for more details on the working ranges. Available lengths: 150 / 200 / 250 / 300 / 400 / 500 / 600 mm.

Pressure ratings:

Pressure ratings for water ** depends on the type of break or damage, pipe OD, medium etc.
Pipe DN 40 up to and including DN 150: 16 bar
Pipe DN 175 up to and including DN 300: 10 bar
Our clamps can be modified to cope with higher working pressures.

*** Please contact Westatlantic your distributor for more information regarding pressures on gas pipes.*

Available rubber gaskets:

WA H.E.A.T clamps can be supplied with the following types of rubber:

EPDM	– potable water – waste water	max 60 degr. C.
EPDM HT	– potable water – waste water	max 150 degr. C.
NBR	– natural gas – potable water – waste water	max 70 degr. C.
VITON	– several chemicals pls. contact WA	max 200 degr. C.